

Squaws University Southern Women's Indoor Regional Qualifiers Tournament

28th and 29th January, 2006

Captain's Pack

>> The Seedings

#	Team Name	Uni
1	Skunks	Southampton
2	Brunel Flair	Brunel
3	Shimmy	Bristol
4	Sublime	Portsmouth
5	Cardiff Angels	Cardiff
6	Strange Blue	Cambridge
7	Bird Bath	Bath
8	Squaws	Sussex
9	Uriel	Exeter
10	Thrown	Kings+ Imperial
11	Picnic	Plymouth
12	Aye-Aye	Norwich
13	Disco Divas	UWE
14	Holloway	Holloway
15	Hot Snatch	UCL
16	SE Scorpions	Surrey & Roehampton
17	Shimmy 2	Bristol
18	Insolent	Portsmouth & Southampton

"We aim to encourage and protect the spirit of ultimate, where, as partners rather than opponents, we compete against the limits of our own abilities to further our skills, rather than competing against the rules to gain advantage."

"We foster a climate of peace in which ultimate may be appreciated for its ability to bring people together in a communal rejoicing of skill and play, and we concurrently learn to live together through playing together. Playing with spirit by no means implies that you don't play to win, but only that you play to win fairly and honestly. Highly competitive play is encouraged, but never at the expense of mutual respect between players, adherence to the agreed-upon rules of the game, or the basic joy of play."

Anonymous

>> The Halls

- At Sussex Uni Sportcentre there are two halls;
 - Hall 1 is located by the changing rooms to the left of the entrance and has a large balcony for viewing games, from which there will be cheap snacks and drinks sold throughout weekend.
 - Hall 2 can be accessed by going straight past the main front desk, there is also a balcony for this hall (accessible by going through Hall 1's balcony) with space for calls, seating and chilling out.
- We have been asked by the sports centre to **keep all bags/belongings well up against the wall on the balcony of Hall 1.**
- Please be sure to clear out of that balcony area as soon as possible after games finish.
- Refrain from doing after-game calls in the obvious area outside Hall 1:- the sports centre staff have asked us to **keep this area clear.** There is space above Hall 2 and outside the main entrance for calls: remember to wipe your feet on the way back in!

>> The Rules

- We are unfortunately playing by the **old** pull rules so a **dropped pull is a turnover**, and you never have to take it from the back line.
- The old pulls rules state that if a pull lands in the pitch and bounces or slides out, you must set your pivot foot on the line where it went out, or from the front of the endzone if it went out the back. If it lands outside the pitch, you must signify your intention to 'middle' the disc by clapping your hands over your head, and walking to the centre, perpendicular to where the disc went out the side.
- The game will finish on the hooter. **If the disc is in the air as it starts to sound** then the pass will be allowed to be completed.
- Teams can play with any number of players up to 5 – picking up players from other teams is not allowed unless discussed with Felix prior to the event.
- All players must be university students – no juniors or associate members.
- No players are permitted to play for more than one team, and no first team players are permitted to play any points for their second teams during the weekend, or vice versa.

>>The Games

- **Captain's meeting: Sussex 8:45am** - Let Cat or Felix know if you can't make it then. (details later)
- Games will start at 9:04am on Saturday and 9:00am on Sunday, finishing at 6:00pm on both days. I know this isn't ideal, but we had to work really hard to get even these times booked. Please ensure that you are ready to start on time if you are playing in the first games.
- Teams have 4 / 5 games on Saturday and most have 2 or 3 games on Sunday. Apologies in advance for any teams that feel hard done by the hall times – believe us when we say we tried our best to get the best deal for all 18 teams.
- The top **six teams** from this tournament will qualify for **University Women's Indoor Nationals**, representing the Southern region against the best of the Northern, Scottish, and Irish Uni Women's teams at **Nottingham** on **25th / 26th February**.
- Group games on Saturday will be **15 minutes** long, and crossover games will be **18 minutes** long. Games are allowed to finish tied in the group stages; decisions will be made on points difference, then on results between teams, then on points scored, and finally on a full team dance-off to be judged by the Mohawks.
- **Most** games on Sunday last **22 minutes** with the important finals lasting **28 minutes**. Draws are not allowed in elimination stages of the tournament – if the scores are level when the hooter sounds, the point is finished with **no check** of the disc necessary. The disc must be **in the air as the hooter sounds** for an equalizer in the dying seconds to count.

>>After Games

- Please use the showers and facilities at Sussex sports centre as your host probably only has 1 shower!
- Saturday: Showers are hot and functioning until late
- Sunday: We are the last booking until the sports centre closes at 6:30pm – they are not paid to stay open any longer so last showers are at **6:00pm**

>>The Party

- After the games, the party will move to the **Park View** pub in Brighton. It is located @ 71 Preston Drive, near to Preston Park (see transport for how to get there)
- The party is themed: **Cowgirls and Indians** and there'll be a **prize** for the best team effort.
- There will be a **FREE buffet dinner** (worth £5 a head), DJ, **FREE** 3-pint challenges (1 per team), a **Mohawk auction**, ultimate videos and much, much more – read on !
- The party ends at 12pm so **get there early** for all the action. There's also an option of a chuck around after in Preston Park so if you have a Flashflight, bring it along.

>>The Mohawk Auction

Taking the Women's theme a little further (maybe too far!) and to make sure the Mohawks are useful, we will be hosting an auction of some of the male tribe. The winning bidder will be lucky enough to have the services of the male for the rest of party and on Sunday. Do as you will with them, they are your equivalent 'JTM'. A few suggestions of their uses are; food hunter / gatherers, water-boys, cheerleaders, morale boosters, and personal physios (!). I have gathered the Mohawk 'finest' and am ecstatic to present;



Kim
"The Cheerleader"

"Bid for me because a good ultimate player is not measured by the quality of their play but the span of their spirit, and loudness of their cheerleading !".



Spike
"The Smooth"

"Bid for me because bassists do it deeper".



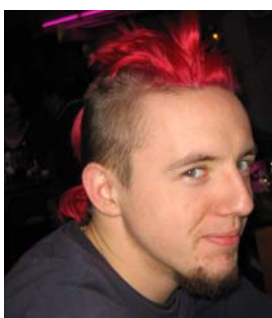
Herpes
"The Youthful"

"Bid for me because I can huck all night".



Tequila
"The Eccentric"

"Bid for me because no-ones nipple hairs are longer".



Felchers
"The Legend"

"Bid for me because I'm made of chocolate".

- The auction will be at about 10pm, so collect your pennies together. You can bid as a team or individually, **Just Bid!!** All funds will go to **Islamic Relief** - www.islamic-relief.com - doing all they can in Pakistan, India, Niger, Mali, Darfur, Palestine, Iraq...

>>The 3 Pint Challenges

- As mentioned there will be a free 3 Pint Challenge for each team and the best time will win a **prize**. Every team will get a voucher on Saturday at the captain's meeting which they will be able to exchange for 3 pints of bitter at the party.
- There will also be an 'official' place for you to do them, with 'official' straws, 'official' timing, and your results will be 'officially' recorded on www.seultimate.org !

>> Food

- There will be a **FREE buffet dinner for all**, available throughout the night and Park View's regular menu will also be available until 9.30pm. More on that under the 'Food section'

Unfortunately all these amazingly awesome things come at a cost and as much as we'd love to pay it all we can only afford to subsidise some of it. This means everyone will also have to **buy a ticket for £2** – which includes the buffet dinner.

These will be available from the TD's (Cat "Pinner" Hamilton and Felix "Felchers" Shardlow) or from the food stall on Hall 1 balcony all day on Saturday.

>>The Accommodation

- Accommodation is available, although it will be a tight fit. If you have asked for floor space then I have arranged for you to stay with one of the Mohawks players, and you will be introduced to them on Friday or Saturday, but in the meantime here is who you're with, and their contact details:

Team:	# players:	Fri/Sat?	Host:	Host's #:
Uriel	8+	Both	Sarah Douglas	07725 579146
Hot Snatch	12	Both	"FLB" Lindsey	07753 222208
Picnic	7	Both	"Fu" Chantelle	07745 586265
Disco Divas	7	Both	"Herps" Dave	07985 093528
Cardiff Angels	9	Both	"SickBob" Bob	07780 936154
Sublime	13	Sat	"Spike" Adam	07740 354819
Skunks	13		"Spike" Adam	07740 354819
Brunel	10	Sat	"Lethal" Johanna	07890 215194
Strange Blue	9	Sat	"Tequila" Ben	07855 719093
Bird Bath	7	Sat	"Milo" miles	07941 590363
Shimmy 1+2	16		"Bob" Alize	07753 214536
Holloway	8		"Hot Lips" Ben	07786 102299
Aye-Aye	10	Both	"Lethal" Johanna	07890 215194
SE Scorpions	9		"Bob" Alize	07753 214536
Thrown & dD	10		Sam/Ham/Jenny	07739 872011

// If you're staying with Spike bring a floor mat because some of the floors are wooden

- If you are staying on campus there is a night bus every hour (**N85** from 10:05pm to 3:05am), which stops in at Fiveways (end of Hollingbury Rd) which is 5/10 mins walk to the top of the hill.
- If you are staying in town it is a 10-20 minute walk to 4 or 5 of the houses where some of you will be staying. Taxis are also numerous, numbers include 202020, 204060, 747474. Ask any Mohawk (particularly the one you're staying with) for further travel information.

>>The Transport

>> To Sussex Sportcentre

○ By Car

The University is on the A27 road between Brighton and Lewes, about four miles (six kilometres) from the centre of Brighton. Visitors driving from London and the north should follow the M23/A23 road towards Brighton. Before you reach Brighton town centre, take the A27 eastbound which is signposted to Lewes. Drivers from the east or west should take the A27 direct to the University. (Please note, opposite the University of Sussex campus at Falmer is the University of Brighton's Falmer site. You should follow the signs to 'Sussex University'.) If you are travelling to Sussex Uni from the West there is an exit off the A27 directly into the University shortly before the Falmer exit, the bend is sharp so slow down in advance. If travelling in from the East take the University exit & follow the signs.

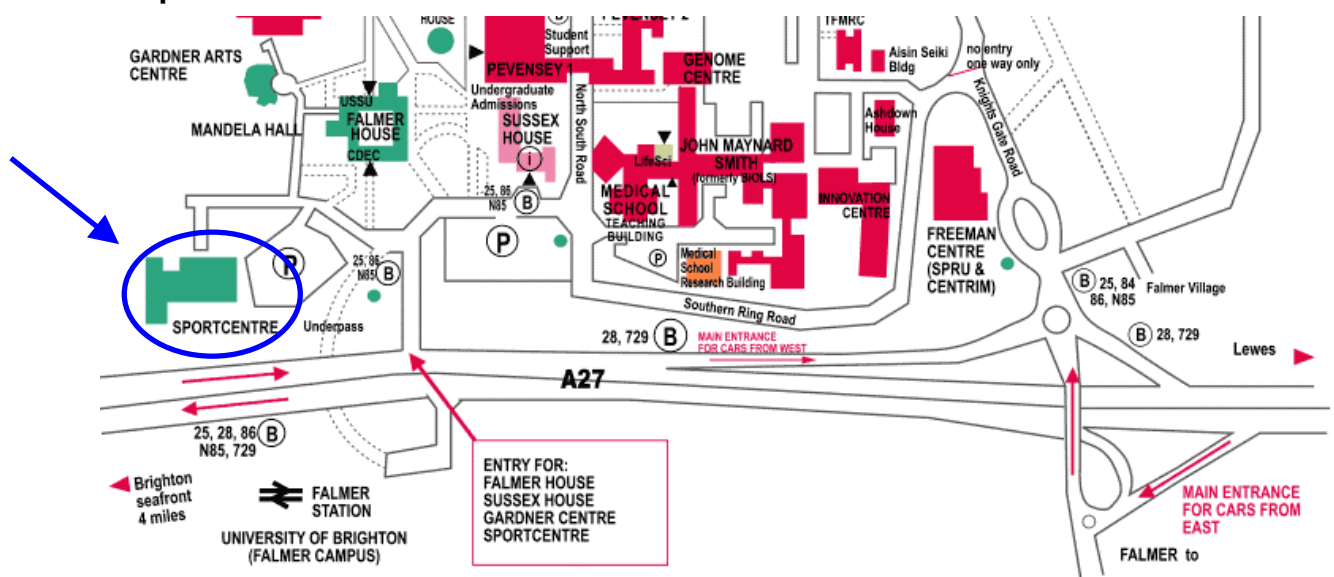
○ By Train

If you get a train ticket to Falmer, chances are you'll have to change at Brighton. Go to platform 8 and there should be a train (to Lewes) every 20 minutes or so – it's an 8 minute journey, 3rd stop.

○ By Bus

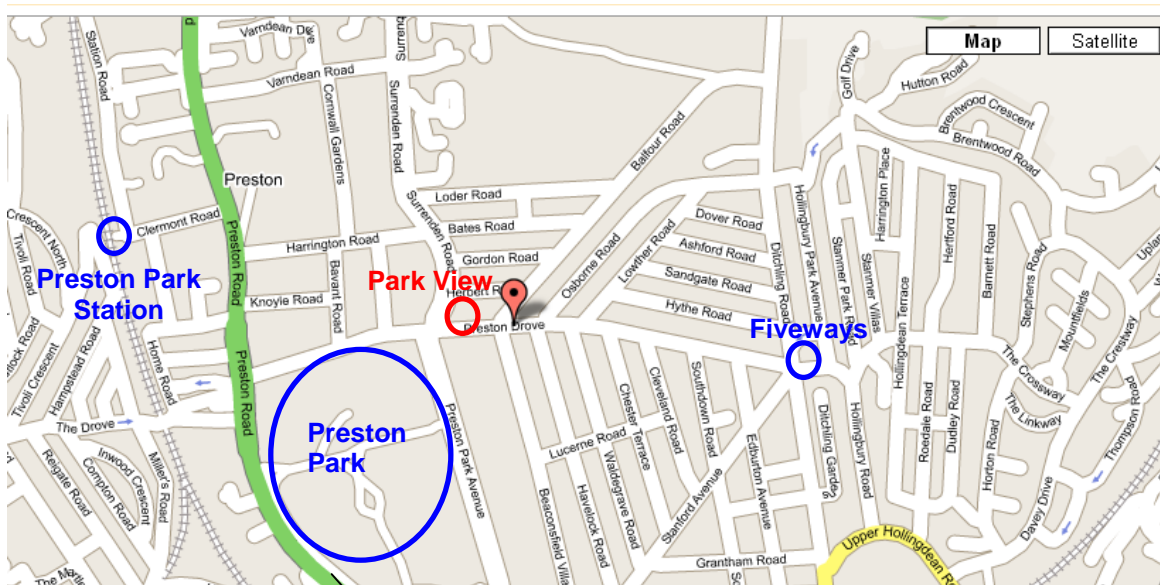
The 25 bus runs to and from campus from central Brighton every 15 minutes until the late evening, then night buses (**N85 & N97**) run every hour in the early hours. (N85 runs near the party venue)

>> The Map



>> To the Party

- *From campus – by bus*
Take the 25/A/B/C into the centre of Brighton (North St where all the shops are, after you see the pier) and then get the 5 or 5A. There will be a big park on your right, Preston Park. Get off the bus at the stop after the park (outside a Vauxhall car dealership), then cross the road and walk up the hill on the side of the park. Park View is about half way up on the right
- *From town – by bus*
Same as above but without the 25 bus trip
- *From campus – by train.*
Get the train from Falmer to Brighton station, then change and get a train that goes to Preston Park. Get off here and exit the station. Walk down to the bottom of the hill and turn right. Walk till you reach traffic lights (Vauxhall dealership on the right) and turn left to go up the hill next to the big park. Park View is about half way up on the right
- *From town – by train.*
Same as above but without the train from Falmer to Brighton



To Brighton town centre

Your host or any Mohawk will be able and happy to direct you or you can call Cat or Felix (details later)

>>Health and Safety

- Be aware of walls and people if attempting a layout; dangerous play will not be tolerated. Punishment for inappropriate play or behaviour will be administered at the discretion of the TD & SE Coordinator.
- In the event of a fire or other need for evacuation, proceed to the area of grass outside the sports centre car park.
- In the event of an accident **DO NOT** call an ambulance, speak to the front desk and call 3333 on a campus phone for the emergency service.

>>Food

- There will be sandwiches, **pasta**, snacks and other goodies available in the sports centre throughout the weekend for a small fee.
- After the games on Saturday there will be a **FREE buffet dinner** available throughout the evening at the party (starting at **7pm**), you can expect – chicken yakitori, veg quesadilla, cod goujons, mediterranean flat bread, calamari, spicy prawns, olives/feta cheese/chorizo salad, wedges, garlic bread and a lot more the chef hasn't decided on yet ! In total worth around **£5** a head, so it will be a **heartly, filling meal for all**.
I encourage you to make use of this so we can get the party started early – and so we don't have lots of food left over. The Park View also has a full menu until 9.30pm. Your host will advise you further on this after you dump your stuff at their house. They will also guide you to the location of the party.

>>Miscellaneous

- Lines in Hall 1, sidelines are **red**, back of the endzone is the **wall**, and front of the endzone is **red**, but will also be marked out with tape at the edges.
- Lines in Hall 2, sidelines are **red**, back of the endzone is the **wall**, and front of the endzone is **blue**.
- If you need to contact the tournament directors at any point, Catriona "Pinner" Hamilton can be reached on 07811 263426 and Felix "Felchers" Shardlow on 07940 973406.
- No eating in the sports halls themselves

And finally,

Keep the spirit alive

>>The Schedule

>>Groups

Group A		Group B		Group C		Group D	
A1	Skunks	B1	Brunel Flair	C1	Shimmy	D1	Sublime
A2	Squaws	B2	Bird Bath	C2	Strange Blue	D2	Cardiff Angels
A3	Uriel	B3	Thrown	C3	Picnic	D3	Aye-Aye
A4	SE Scorpions	B4	Hot Snatch	C4	HollowayHammers	D4	Disco Divas
A5	Shimmy 2	B5	Insolent				

>>SATURDAY

GROUP GAMES

(15 mins, 1min changeover)

Hall 1		Hall 2						
15min →	09:04			Brunel Flair	V	Thrown	09:04	
	09:20			Skunks	V	Uriel	09:20	
	09:36			Shimmy	V	Picnic	09:36	
	09:52			Sublime	V	Aye-Aye	09:52	
	10:08			Bird Bath	V	Hot Snatch	10:08	
	10:24			Squaws	V	SE Scorpions	10:24	
	10:40			Brunel Flair	V	Insolent	10:40	
	10:56			Skunks	V	Shimmy 2	10:56	
	11:12			Strange Blue	V	HollowayHammers	11:12	
	11:28			Cardiff Angels	V	Disco Divas	11:28	
	11:44			Thrown	V	Insolent	11:44	
	12:00		Uriel	V	Shimmy 2		12:00	
	12:16		Brunel Flair	V	Bird Bath		12:16	
	12:32		Skunks	V	Squaws		12:32	
	12:48		Shimmy	V	Strange Blue		12:48	
13:04		Sublime	V	Cardiff Angels		13:00		
13:20		Picnic	V	HollowayHammers	Thrown	V	Hot Snatch	13:15
13:36		Aye-Aye	V	Disco Divas	Uriel	V	SE Scorpions	13:30
13:52		Strange Blue	V	Picnic	Bird Bath	V	Insolent	13:45
14:08		Cardiff Angels	V	Aye-Aye	Squaws	V	Shimmy 2	14:00
14:24		Bird Bath	V	Thrown	Brunel Flair	V	Hot Snatch	14:15
14:40		Squaws	V	Uriel	Skunks	V	SE Scorpions	14:30
14:56		Hot Snatch	V	Insolent	Shimmy	V	HollowayHammers	14:45
15:12		SE Scorpions	V	Shimmy 2	Sublime	V	Disco Divas	15:00 end
18min →	15:28	6		C3	V	B3		(Crossovers begin)
	15:47	7		A4	V	D4		(18 mins, 1min changeover)
	16:06	8		C4	V	B4		
	16:25	5		A3	V	D3		
	16:44	2		C1	V	B1		< Semi Final
	17:03	4		C2	V	B2		
	17:22	1		A1	V	D1		< Semi Final
	17:41	3		A2	V	D2		
18:00							END	

A5 and B5 play their crossover at 12:00 tomorrow

All other teams adopt a new name, for example the winner of the last game becomes **W3**, and the loser becomes **L3**.

>>SUNDAY

Hall 1				Hall 2			
22mins →	09:00	11	L4 V W5	13	L6 V W7	09:00	19mins
	09:23	9	L2 V W3	14	L5 V W8	09:20	19mins
	09:46	12	L3 V W6	S1	L7 V L8	09:40	19mins
	10:09	10	L1 V W4	10:00 < Winner advances to Plate Final			
	10:32	20	W13 V W14				
	11:00	BRUNCH		BRUNCH			
	11:30						
	12:00	S2	A5 V B5	< Spoon Semi Final < Loser drops to Qualification Final < Loser drops to Plate Final < Winner advances to Qualification Final < Championship Grand Final (1st place)			
	12:23	17	L9 V L10				
	12:46	19	L11 V L12				
	13:09	18	W11 V W12				
26mins →	13:36	15	W1 V W2				
22mins →	14:00	For a shot at 2nd place > 8th / 9th place > 12th / 13th place > 4th / 5th place >		21	L13 V L14	14:00	22mins
	14:23			16	W9 V W10	14:23	
	14:46			25	L18 V W19	14:46	
	15:09			26	L20 V W21	15:09	
24mins →	15:32			23	L16 V W17	15:32	24mins
28mins →	16:00	22	L15 V W16	< Runner-up Final (2nd / 3rd) < Spoon Final (15th / 16th) < Plate Final (10th / 11th) < Qualification Final (6th / 7th)			16:00
	16:30	S3	WS1 V WS2				
	17:00	27	L19 V W20				
	17:30	24	L17 V W18				
	18:00	Presentation					

Apologies to the two teams that only get to play one game today - we tried our best to secure more hall time but it just couldn't happen, so we hope you enjoy watching all the other ladies in our region showing us what they got, and stick around for the all-exciting Qualification Final!

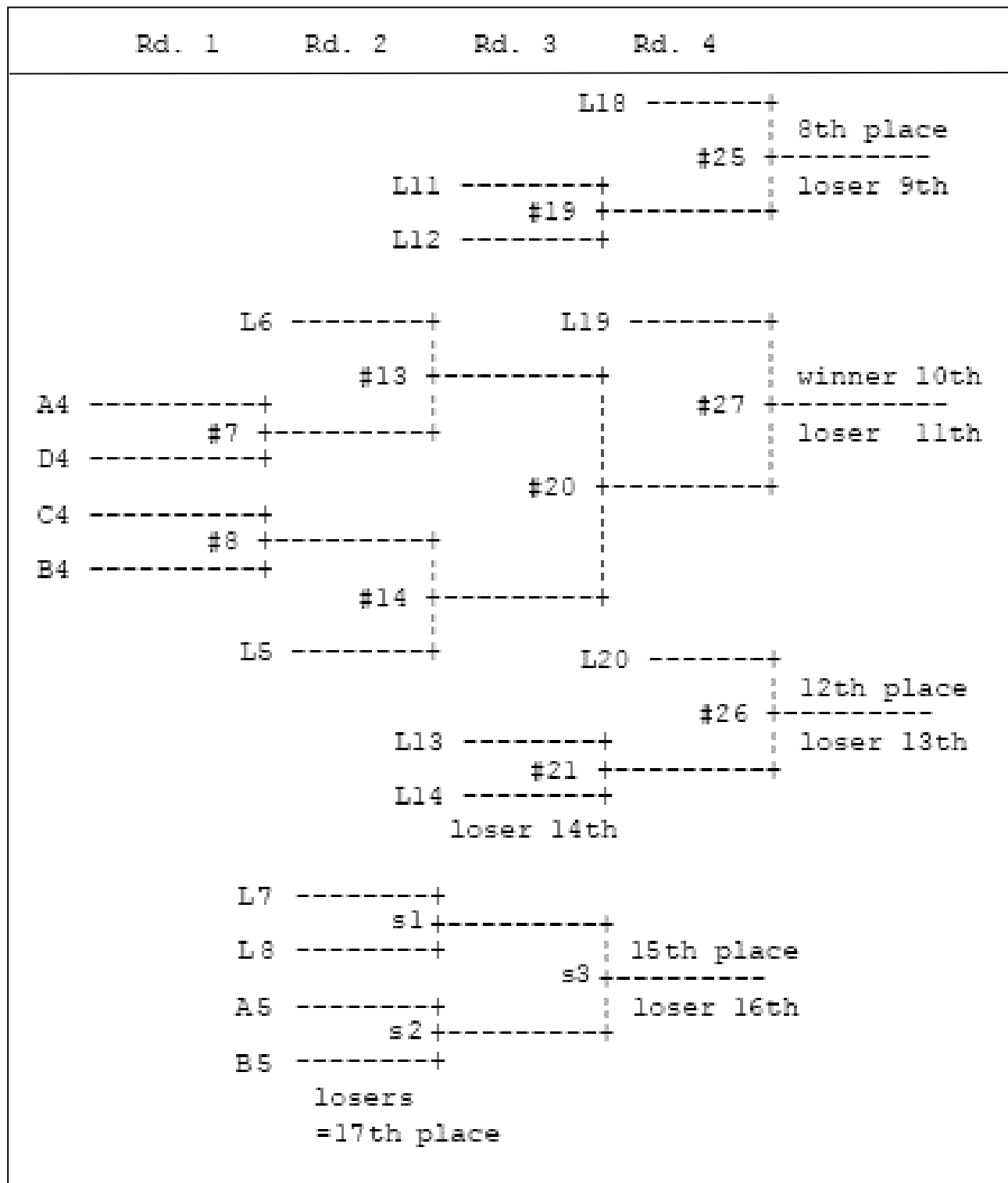
Please shower before the presentation if possible, and afterwards clean up any rubbish lying around & leave fairly promptly. Thanks for coming & hope you enjoyed the first ever University Southern Women's Indoor Regionals!

>> Behind the Schedule

>>The Pools

Group A	Group B	Group C	Group D
Seed #1	Seed #2	Seed #3	Seed #4
Seed #8	Seed #7	Seed #6	Seed #5
Seed #9	Seed #10	Seed #11	Seed #12
Seed #16	Seed #15	Seed #14	Seed #13
Seed #17	Seed #18		

>>The Consolation Bracket



>> The Votes

- Please hand this sheet in to Cat or Felix, or a Mohawk after the games on Sunday.

Spirit of the game

2nd

MVP of the Qualification (6/7) Final

Most Pissed Person

Party Award

Best Fancy Dress (team effort)

Sharking Award – (this is Brighton after all !!)